

Flexible Solutions  
**DURAFLEX**™ INC.  
 for Rigid Applications

**OIL & GAS BELLOWS**

Duraflex, Inc.'s **Oil & Gas Bellows** are expandable convoluted metal elements used to impart motion to a recording or controlling element within an instrument (or) to provide a flexible seal for pump shafts, etc.

**APPLICATIONS | INDUSTRIES**

**Gas Lift Technology:** A **BELLOWS** acts as the pressurized accumulator used to operate the valve.

**Oil & Natural Gas:** Many different styles of **BELLOWS** are utilized as integral components of equipment & stand-alone assemblies.

Duraflex, Inc.'s specialized products are used in every aspect of operations from refining, to the distribution of **Petroleum & Natural Gas** products including:

- Actuation
- Controlling Fugitive Emissions
- Data Logging
- Down Hole-Drilling
- Emissions Control
- Evacuation
- Exploration
- Fracking
- Geological Surveyance
- Gradiomanometers  
*(for Fluid Density Measurements)*
- High Pressure Bellows
- Gas Lift Seals
- Material Run-Off
- Measurement
- Media Separation
- Protective Covers | Quartz Pressure Sensors



**PRODUCTS | CUSTOM & STANDARD**

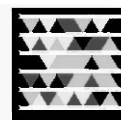
\* = Components    \*\* = Assemblies

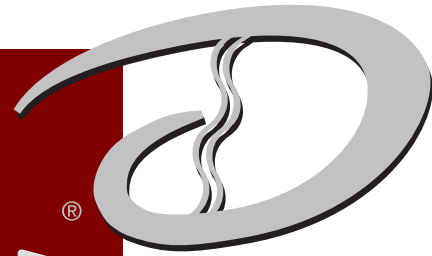
Duraflex, Inc. offers an extensive array of high tech **flexible components & full assemblies!**



- |   |      |                               |      |
|---|------|-------------------------------|------|
| ■ Bellows, Actuators  | * ** | ■ Bellows, Valve Stem         | * ** |
| ■ Bellows, Compensators                                     | * ** | ■ Control Instrumentation     | *    |
| ■ Bellows, Edge-welded                                      | * ** | ■ Dispensing Equipment        | *    |
| ■ Bellows, Gas Lift   | * ** | ■ Electrical Switchgear       | *    |
| ■ Bellows, Hydroformed                                      | * ** | ■ Expansion Joints            | * ** |
| ■ Bellows, (LWD)  | *    | ■ Flexible Couplings          | * ** |
| ■ Bellows, (MWD)<br><i>Logging While Drilling Equipment</i> | *    | ■ Hose, Hydraulic             | * ** |
| ■ Bellows, (MWD)<br><i>Mud While Drilling Equipment</i>     | *    | ■ Hose, Metal                 | * ** |
| ■ Bellows, Rotary Seals                                     | * ** | ■ Hoses, Drain & Evacuation   | * ** |
| ■ Bellows, Seals  | * ** | ■ Measurement Instrumentation | *    |
| ■ Bellows, Valve Seals                                      | *    | ■ Metering Equipment          | *    |

*Products are available for any application involving flexible solutions for rigid applications.*





Flexible Solutions  
**DURAFLEX**™ INC.  
 for Rigid Applications

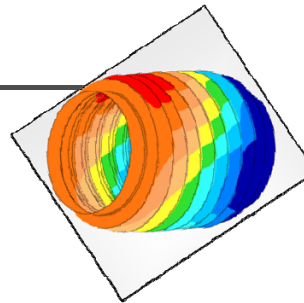
**OIL & GAS BELLOWS**

**MATERIALS**

- |          |             |             |           |                   |              |
|----------|-------------|-------------|-----------|-------------------|--------------|
| ■ AM 350 | ■ HASTELLOY | ■ HY-MU     | ■ INCONEL | ■ STAINLESS STEEL | ■ TITANIUM   |
| ■ BRASS  | ○ B         | ■ INCOLOY®  | ○ 600     | ○ T347            | ○ Grades 1-4 |
| ■ COPPER | ○ B2        | ■ MONEL 400 | ○ 625     | ○ T304 (L)        | ○ ASTM B-265 |
| ■ HAYNES | ○ C         | ■ NICKEL    | ○ 718     | ○ T309 (L)        |              |
| ○ 242    | ○ C-22      |             | ○ 725     | ○ T310            |              |
| ○ 230    | ○ C-276     |             | ○ 825     | ○ T316 (L)        |              |
|          |             |             |           | ○ T321 (L)        |              |

**DESIGN | ENGINEERING**

- Exceptional Design
- EJMA / MIT / FEA Analysis
- Auto CAD / ProE / Solid Edge
- Qualified Engineering
- Vibration / Cycle Life Analysis
- Repairs: Hose & Valve



**TESTING**

- Axial
- Cycling
- Lateral
- Leak
- Pressure | Temperature
- Spring Rate
- Vibration



*Or any combination!*



**BENEFITS | ADVANTAGES**

- Custom & Standard Products
- 24/7 Emergency Service & Response
- Corrosion Resistance
- High Temperatures
- Maximum Level Quality Control | Zero Defects Guaranteed
- Highest Pressured Bellows & Metal Hose in Industry
- Life-time Warranty Available
- Pre-modeled & Tested for Longevity
- Reliable Repair



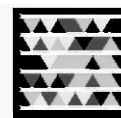
Canadian Representation

**CUSTOMERS | SERVICE PROVIDERS**

Multi-National Energy Companies (On & Off Shore)



DURAFLEX, INC.™ | 765 INDUSTRIAL DRIVE, CARY, IL 60013  
 PHONE 877.462.1007 | FAX 847.462.1450 | E-MAIL info@duraflexinc.com  
 www.duraflexinc.com | 24/7 EMERGENCY | 847.337.9459



© Copyrights 2011 Duraflex, Inc.™ All rights reserved.

