

# PRECISION TUBING



## CUSTOM “MADE-TO-ORDER” TUBING

*Designed & Fabricated for a variety of critical or demanding applications!*

### APPLICATIONS

- Concentrated Solar Vacuum Tubing
- Cryogenic
- Dairy
- Formed Tubing
- Heat Exchange Tubing
- Pharmaceutical
- Semi Conductor
- Shaped Tubing
- Solar Thermal Tubing
- Storage Vessel Pressure Tubing
- Tubing for Bellows Fabrication
- Vacuum / UHV

### SERVICES

- Precision Welded Assemblies
  - Laser
  - TiG
  - MicroTiG
- Precision Laser Cut Components
- Laser Etched Components for Traceability
- Seamless Tube Procurement / Forming
- Seamless Tube Assemblies

### SPECIFICATIONS

#### PRESSURES

Dependent on wall thickness, material & number of plies: Vacuum to 5,000 psi.

#### SHAPES

- Round
- Elliptical
- Race Track
- Flattened
- Oval
- Articulated
- Rectangular *Camera Corner*



#### SIZES

- .125”- 20” ID
- .150—22” OD

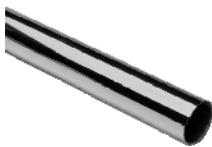


#### PLIES

- Single
- Multi-ply\*
- Dissimilar metal plies have been made to specific customer requirements—such as a copper inner with a stainless outer ply.  
*\*2 to 15, dependent on wall thickness & diameters*

#### WALL THICKNESS

- Welded, not drawn = min. wall thickness of .004”
- Welded, not drawn = min. wall thickness of .002”
- Seamless, drawn = min. wall thickness of .0005”



*No order is too small...Short lead times!*

MAIN OFFICE 765 INDUSTRIAL DRIVE, CARY, IL 60013 | TELEPHONE 877.462.1007  
FAX 847.462.1450 | E-MAIL [info@duraflexinc.com](mailto:info@duraflexinc.com) | WEBSITE [www.duraflexinc.com](http://www.duraflexinc.com)

# PRECISION TUBING



## MATERIALS

Thickness range from .001" to .125"

- |  |  |  |
|--|--|--|
| <ul style="list-style-type: none"> <li>■ STAINLESS STEEL                             <ul style="list-style-type: none"> <li>○ T- 347</li> <li>○ T-304 (L)</li> <li>○ T- 316 (L)/Ti</li> <li>○ T-321 (L)</li> <li>○ AM 350</li> </ul> </li> <li>■ TITANIUM                             <ul style="list-style-type: none"> <li>○ Grades 1 - 4</li> <li>○ ASTM B-265</li> </ul> </li> </ul> | <ul style="list-style-type: none"> <li>■ INCONEL                             <ul style="list-style-type: none"> <li>○ 625</li> <li>○ 625 LCF</li> <li>○ 600</li> <li>○ 718</li> <li>○ X-750</li> </ul> </li> <li>■ HAYNES                             <ul style="list-style-type: none"> <li>○ 242</li> <li>○ 230</li> </ul> </li> </ul> | <ul style="list-style-type: none"> <li>■ HASTELLOY                             <ul style="list-style-type: none"> <li>○ B</li> <li>○ C-22</li> <li>○ C-276</li> </ul> </li> <li>■ MONEL 400</li> <li>■ ALUMINUM</li> <li>■ NICKEL</li> <li>■ INCOLOY®</li> <li>■ COPPER</li> </ul> |
|--|--|--|

**NOTE:** For Carbon Steel Coated tubing and pipe, please reference the Duraflex Carbon Steel Pipe brochure.

## CERTIFICATIONS

### WELDING

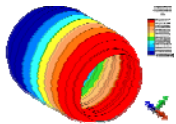
- |                          |               |
|--------------------------|---------------|
| ○ ASME , Section IX      | ○ AS478 Rev L |
| ○ AWS D17.1:2001, Sect 4 | ○ MIL-STD-130 |
| ○ AS478 Rev L            | ○ ASTM        |

### QUALITY

- |                  |                        |
|------------------|------------------------|
| ○ ISO 9001: 2000 | ○ CAGE Code: 3XWB2     |
| ○ AS 9100B Cert. | ○ Small Business Cert. |



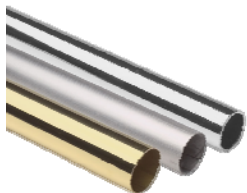
## ENGINEERING



- |            |                    |            |
|------------|--------------------|------------|
| ○ Design   | ○ Failure Analysis | ○ Pro-E    |
| ○ Modeling | ○ FMEA             | ○ Auto-Cad |
| ○ Testing  | ○ FEA              | ○ EJMA     |



Duraflex precision tubing and custom bellows have been among the first prototypes designed and developed early on as “infinite life” products to support the demand for these growing industry. Today, literally miles of Duraflex tubing and bellows products have been utilized to help make our world and our energy production safer and more reliable.



### CUSTOM “MADE-TO-ORDER” TUBING

Designed & Fabricated for a variety of critical or demanding applications!  
*No order is too small...Short lead times!*

