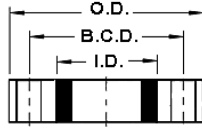
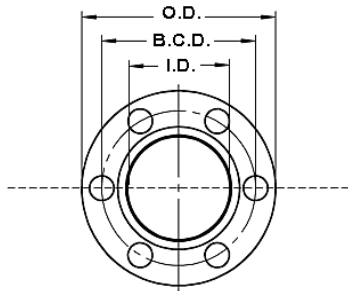


COMMON FLANGE DIMENSIONS

- 25 / 125 / 150 LBS DRILLING
- 250 / 300 LBS DRILLING



25 / 125 / 150 LBS DRILLING							
Nom. Dia.	Outside Dia. (O.D.)	Bolt Circle Dia. (B.C.D.)	# of Bolts	Dia. Of Holes ANSI B15.1 Class 125 ANSI B16.24	Dia. Of Holes ANSI B16.1	Dia. Of Holes AWWA C207-78 Table 1 Class D Table 2 Class D Table 3 Class E	Dia. Of Holes AWWA C207-78 Table 1 Class B Table 2 Class B
2	6.00	4.75	4	.75	—	.75	—
2.5	7.00	5.50	4	.75	—	.75	—
3	7.50	6.00	4	.75	—	.75	—
4	9.00	7.50	8	.75	.75	.75	.75
6	11.00	9.50	8	.875	.75	.875	.75
8	13.50	11.75	8	.875	.75	.875	.75
10	16.00	14.25	12	1.00	.75	1.00	.75
12	19.00	17.00	12	1.00	.75	1.00	.75
14	21.00	18.75	12	1.125	.875	1.125	.875
16	23.50	21.25	16	1.125	.875	1.125	.875
18	25.00	22.75	16	1.25	.875	1.25	.875
20	27.50	25.00	20	1.25	.875	1.25	.875
24	32.00	29.50	20	1.375	.875	1.375	.875
30	38.75	36.00	28	1.375	1.00	1.375	1.00
36	46.00	42.75	32	1.625	1.00	1.625	1.00
42	53.00	49.50	36	—	—	1.625	1.125
48	59.50	56.00	44	1.625	1.125	1.625	1.125
54	66.25	62.75	44	2.00	1.125	1.875	1.375
60	73.00	69.25	52	2.00	1.25	1.875	1.375

250 / 300 LB DRILLING				
ANSI B16.1 Class 250 / ANSI B16.24 / ANSI B16.5 Class 300 / MSS SP-44 Class 300				
Nom. Dia.	Outside Dia. (O.D.)	Bolt Circle Dia. (B.C.D.)	# of Bolts	Dia. Of Holes
2	6.50	5.00	8	.75
2.5	7.50	5.875	8	.875
3	8.25	6.625	8	.875
4	10.00	7.875	8	.875
6	12.50	10.625	12	.875
8	15.00	13.00	12	1.00
10	17.50	15.25	16	1.25
12	20.50	17.75	16	1.25
14	23.00	20.25	20	1.25
16	25.50	22.50	20	1.375
18	28.00	24.75	24	1.375
20	30.50	27.00	24	1.375
24	36.00	32.00	24	1.625
30	53.00	39.25	28	2.00*
36	50.00	46.00	32	2.25*
42	57.00*	52.75*	36*	2.25*
48	65.00*	60.75*	40*	2.25*
54	65.25	61.00	28	2.375
60	71.25	67.00	32	2.375

* Dimension shown does not meet MSS SP-44

Notes:

This table is intended for estimating purposes only. Applications vary, confirm all dimensions with your engineering department prior to ordering. Refer to the ASME B16.1-1989 standard for complete engineering and applications information. All dimensions are in

TOLL FREE 877.462.1007

FAX 847.462.1450

24/7 EMERGENCY SERVICE 847.337.9459

www.duraflexinc.com



© Copyrights 2004 Duraflex, Inc.™ All rights reserved.

765 INDUSTRIAL DRIVE

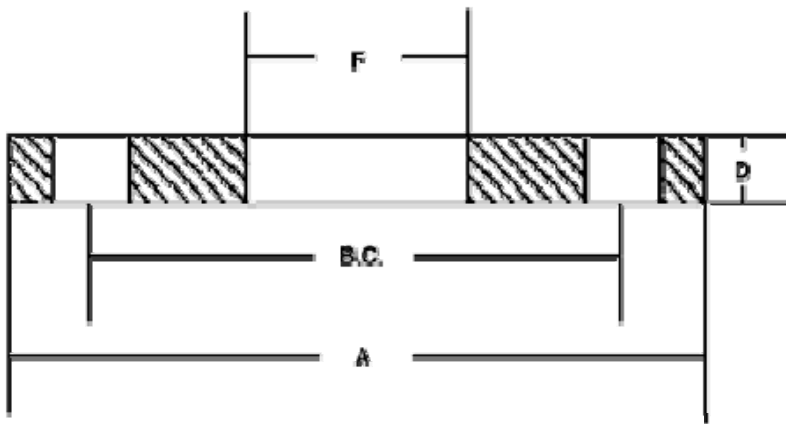
CARY, IL 60013

EMAIL info@duraflexinc.com

COMMON FLANGE DIMENSIONS

NAVY DRILLING PLATE SLIP ON FLANGE

● DWG 810-4715319
● MIL-F-20042



100 / 150 Lbs, PSI

NAVY DRILLING PLATE SLIP ON FLANGE

NPS Size	A	D	F	# of Holes	Hole Dia.	B.C	Est. Weight
1/4	3.25	0.375	0.580	3	9/16	2.125	0.80
3/8	3.375	0.375	0.715	3	9/16	2.250	0.90
1/2	3.563	0.375	0.880	3	9/16	2.438	1.00
3/4	3.813	0.438	1.090	4	9/16	2.688	1.30
1	4.250	0.438	1.355	4	9/16	3.125	1.60
1-1/4	4.500	0.438	1.700	4	9/16	3.375	1.80
1.5	5.063	0.438	1.950	6	9/16	3.938	2.20
2	5.563	0.438	2.411	6	9/16	4.438	2.60
2.5	6.125	0.500	2.913	6	9/16	5.000	3.40
3	6.625	0.500	3.543	8	9/16	5.500	3.70
3.5	7.188	0.500	4.054	8	9/16	6.063	4.10
4	7.688	0.500	4.552	8	9/16	6.563	4.50
5	9.063	0.563	5.620	10	11/16	7.813	6.50
6	10.125	0.563	6.682	12	11/16	8.875	7.50
8	12.375	0.625	8.682	14	11/16	11.063	11.30
10	15.000	0.688	10.807	15	13/16	13.438	17.20
12	17.625	0.750	12.807	18	13/16	16.063	25.60

200 / 250 Lbs, PSI

NAVY DRILLING PLATE SLIP ON FLANGE

NPS Size	A	D	F	# of Holes	Hole Dia.	B.C	Est. Weight
1/4	3.25	0.688	0.580	3	9/16	2.125	1.60
3/8	3.375	0.688	0.715	3	9/16	2.250	1.70
1/2	3.563	0.688	0.880	3	9/16	2.438	1.90
3/4	3.813	0.688	1.090	4	9/16	2.688	2.10
1	4.250	0.750	1.355	4	9/16	3.125	2.80
1-1/4	4.500	0.813	1.700	4	9/16	3.375	3.30
1.5	5.063	0.813	1.950	6	9/16	3.938	4.10
2	5.563	0.813	2.411	6	11/16	4.438	4.60
2.5	6.125	0.938	2.913	6	11/16	5.000	6.20
3	6.625	0.938	3.543	8	11/16	5.500	6.60
3.5	7.188	1.000	4.054	8	11/16	6.063	7.90
4	7.688	1.000	4.552	8	11/16	6.563	8.80
5	9.063	1.063	5.620	10	11/16	7.813	12.40
6	10.125	1.188	6.682	12	11/16	8.875	15.70
8	12.375	1.313	8.682	14	11/16	11.063	23.70
10	15.000	1.438	10.807	15	13/16	13.438	35.90
12	17.625	1.500	12.807	18	13/16	16.063	51.30

Notes:

This table is intended for estimating purposes only. Applications vary, confirm all dimensions with your engineering department prior to ordering. All dimensions are in inches unless otherwise noted. Inside diameter and thickness dimensions are application specific.

